

# V9 Super function manual

V1.0

04/12/2017

## Preface

This file is a manual for V9 Super box .it will give a guide for our customer to operate this box easily .It contain the cccam/newcam/mgcam import guide,softcam import guide,software upgrade guide and import IPTV function guide.

Attention!

This file is only for Freesat V9 Super Customer .No one is allowed to be allowed to pass out without our permission.

## Contents

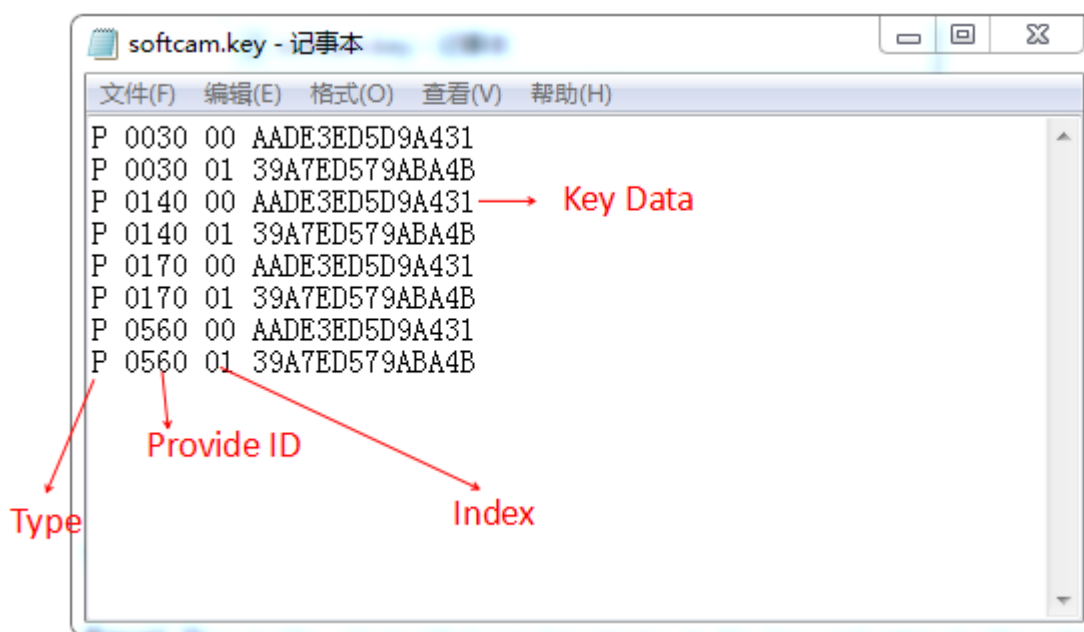
<b>1. How to Import/Export softcam key to box .....</b>	<b>4</b>
1.1 Import Softcam key .....	4
1.2 Export Softcam key .....	6
1.3 Softcam Key Example. ....	6
<b>2. How to Import cccam/newcam/mgcam key to box .....</b>	<b>7</b>
2.1 Import cccam/newcam/mgcam key .....	7
2.2 cccam/newcam/mgcam Key Example .....	9
<b>3. How to Import/Export IPTV to box.....</b>	<b>9</b>
3.1 Import IPTV .....	9
3.2 Export IPTV .....	12
<b>4. How to upgrade software .....</b>	<b>12</b>
4.1 USB upgrade .....	12
4.2 Network upgrade.....	13
4.3 Force upgrade.....	18

## 1. How to Import/Export softcam key to box

### 1.1 Import Softcam key

➤ **Step 1** Create a txt file then rename it to **softcam.key** on your PC.

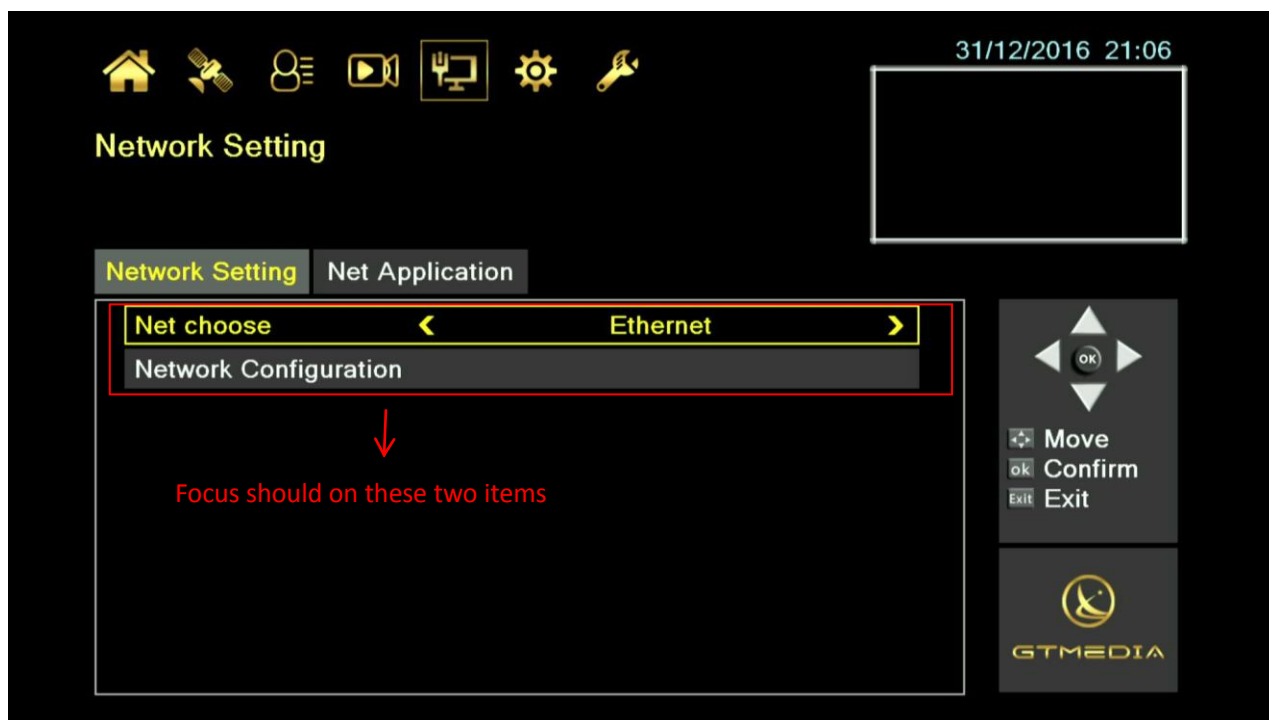
➤ **Step 2** Edit the softcam.key as below picture (P-1).The picture shows import 8 powerVu key to box.if you want to import other softcam key,please edit refer to the format on 1.3 softcam key example.



P-1

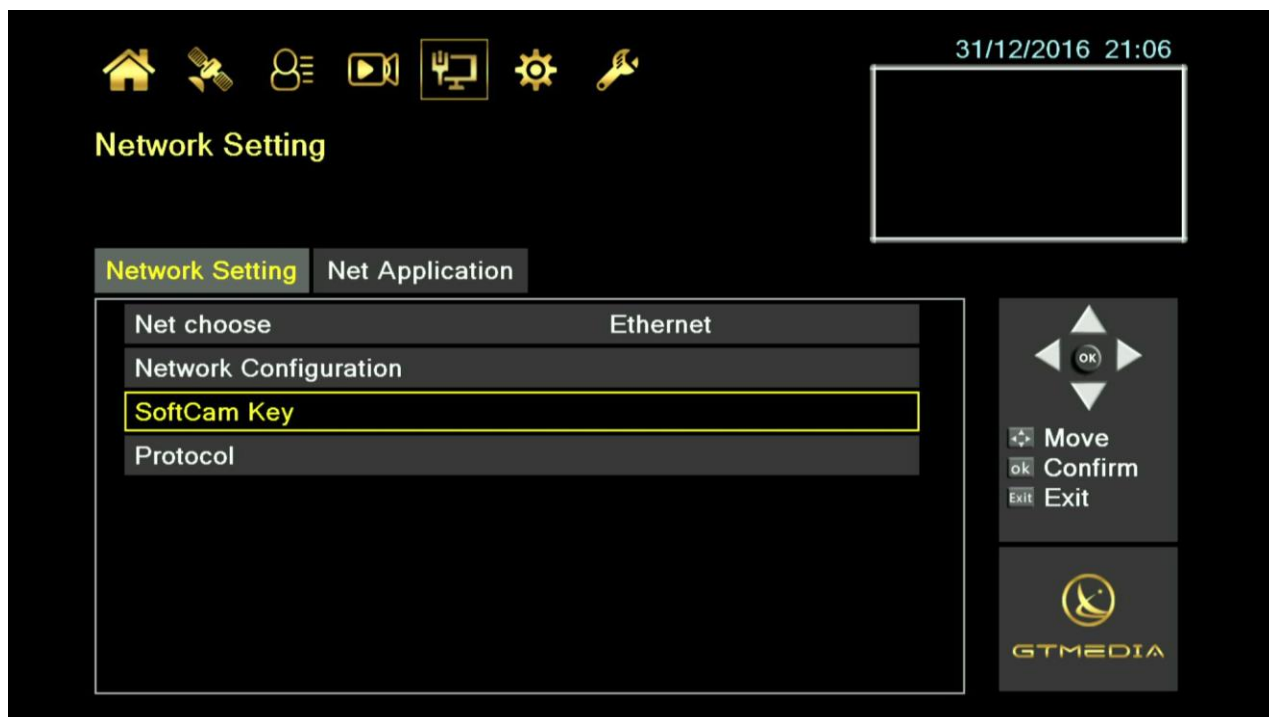
➤ **Step 3** Prepare a usb storage and copy the softcam.key file to it.

➤ **Step 4** Plug in the usb to V9 Super box, power on the box and enter to the submenu of Network Setting (like below picture P-2).



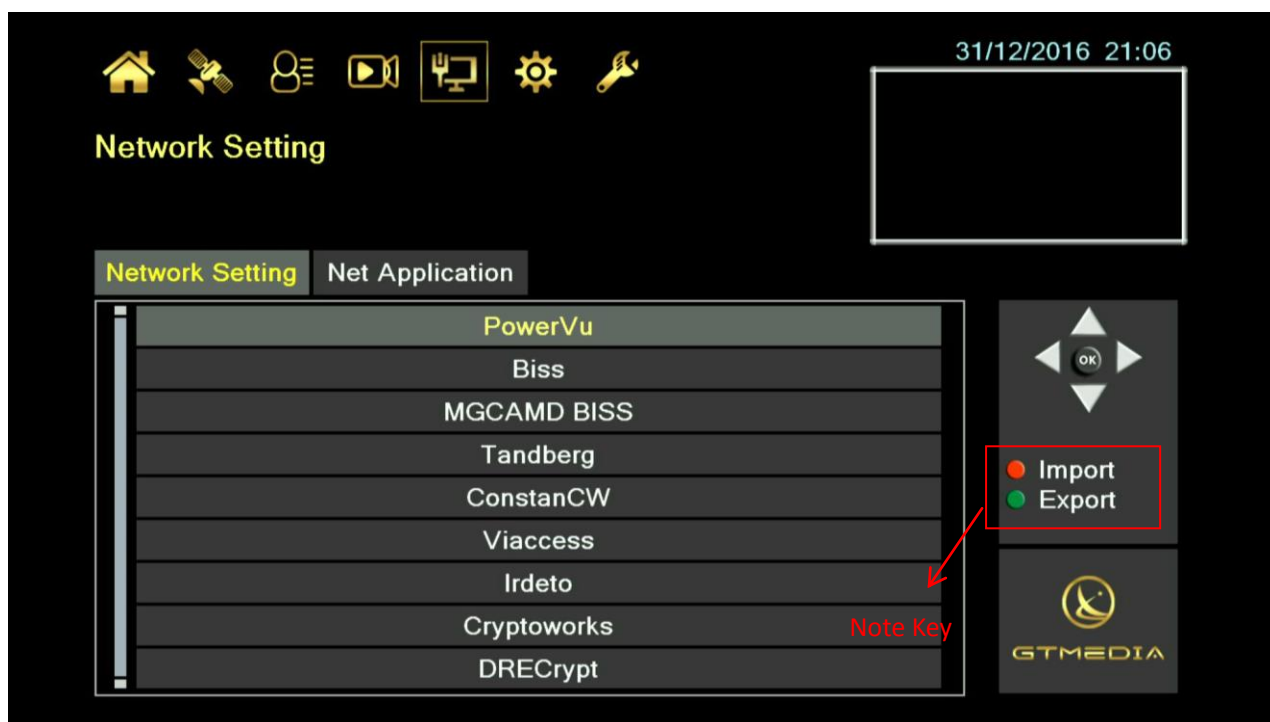
P-2

**Step 5** Make sure the focus is on the “Net choose “or “Network Configuration” item, then press “6666” on remote and it will show two hidden items like below picture(P-3), focus on “SoftCam Key” item then press ‘OK’.



5

➤ **Step 6** Choose the type of key you want import then focus on it (like below picture P-4, we focus on powerVu), press Red key as the note key on the right, for a moment it will pop up a dialog remind you whether it is success or not. (if it fail, please check the softcam key format is the same as the sample).



➤ **Step 7** if it shows you have successful import the key, you can go to dvb and play the scrambled programme which declassified by your key.

## 1.2 Export Softcam key

➤ **Step 1** Plug in the usb to V9 Super box, power on the box and enter to the submenu of Network Setting (like up picture P-2).

➤ **Step 2** Press "6666" on remote and it will show two hidden items like up picture (P-3), focus on "SoftCam Key" item then enter OK key.

➤ **Step 3** Choose the type of key you want export then focus on it, Press Green key as the note key on the right (P-4 note key describe), for a moment it will pop up a dialog that remind you whether it is success or not. (if it fail, please check the usb is mount successful or not, if it success, it will produce a file name "softcam\_export.key" on usb).

## 1.3 Softcam Key Example.

##### PowerVu Sample#####

P 0030 00 AADE3ED5D9A431

P 0030 01 39A7ED579ABA4B

P 00558020 00 BFC4EF57666AC9

##### BISS Providers Sample #####

F 00011FFF 00 1313133913131339

F 00011FFF 01 2016033905EE6659

##### MGCAMD BISS Providers Sample #####

B 1FFF 03954:03850:V A6B7C825D91011FA

##### DRECRYPT Providers Sample#####

D 4AE111 3B00 18A77EB3F46E96E567178B9C28B013E65139836BC4A489C42011E097FA096A0F ;

##### IRDETO 2 Providers Sample#####

I 0604 02 DFDD0C4B92B4ABD26514B9AF9F0C79C4

##### VIACCESS 1 Providers Sample#####

V 001C10 08 03A857610B5F1269

##### VIACCESS Providers Sample#####

V 023800 08 955CF3C92800F39F54B93005DF826DBF

V 023800 D1 0B552C11AF0A2FB8

##### NAGRAVISION 2 Providers Sample#####

N 1102 00 F8780ECD862D143B9B23ECFFCBB872A4

##### CRYPTOWORKS Providers Sample#####

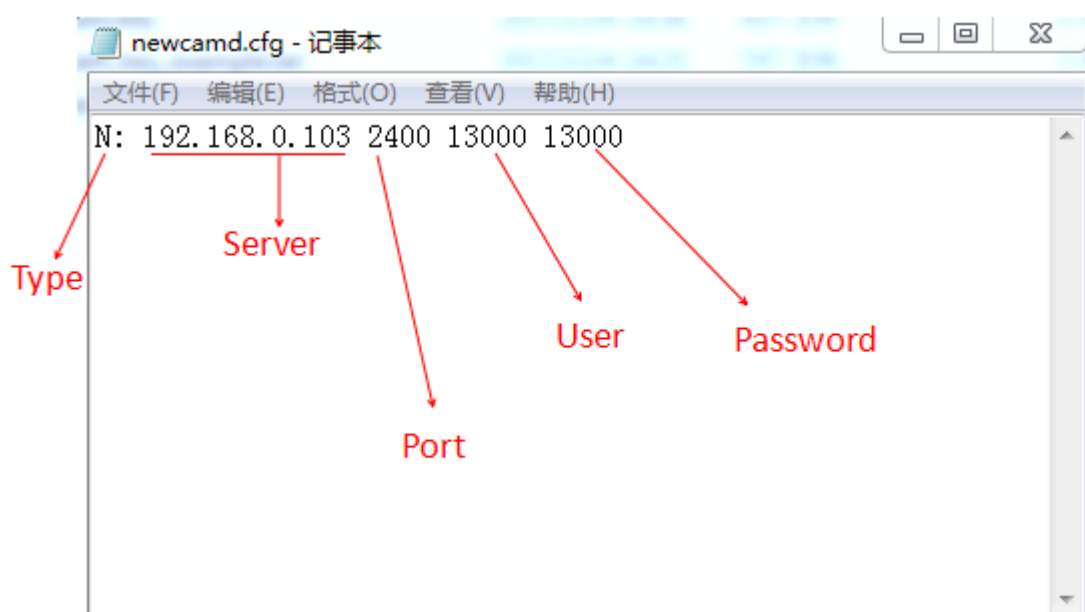
W 0D02A0 00 307249C2E6CA1BFC698C79B4C64E810C

## 2. How to Import cccam/newcam/mgcam key to box

### 2.1 Import cccam/newcam/mgcam key

➤ **Step 1** Create a txt file then rename it to **cccam.cfg/mgcamd.cfg/newcamd.cfg** (decided by the kind of key you want import) on your PC.

➤ **Step 2** Edit the XXXcamX.cfg.key as below picture (P-5).The picture shows import one newcam key to box.On this file,I used default desk key '0102030405060708091011121314',so I don't add deskey on the end.if you want import other type of key,refer to the format on 2.2 cccam/newcam/mgcam key example.



P-5

➤ **Step 3** Prepare a usb storage and copy the XXXcamX.cfg file to it.

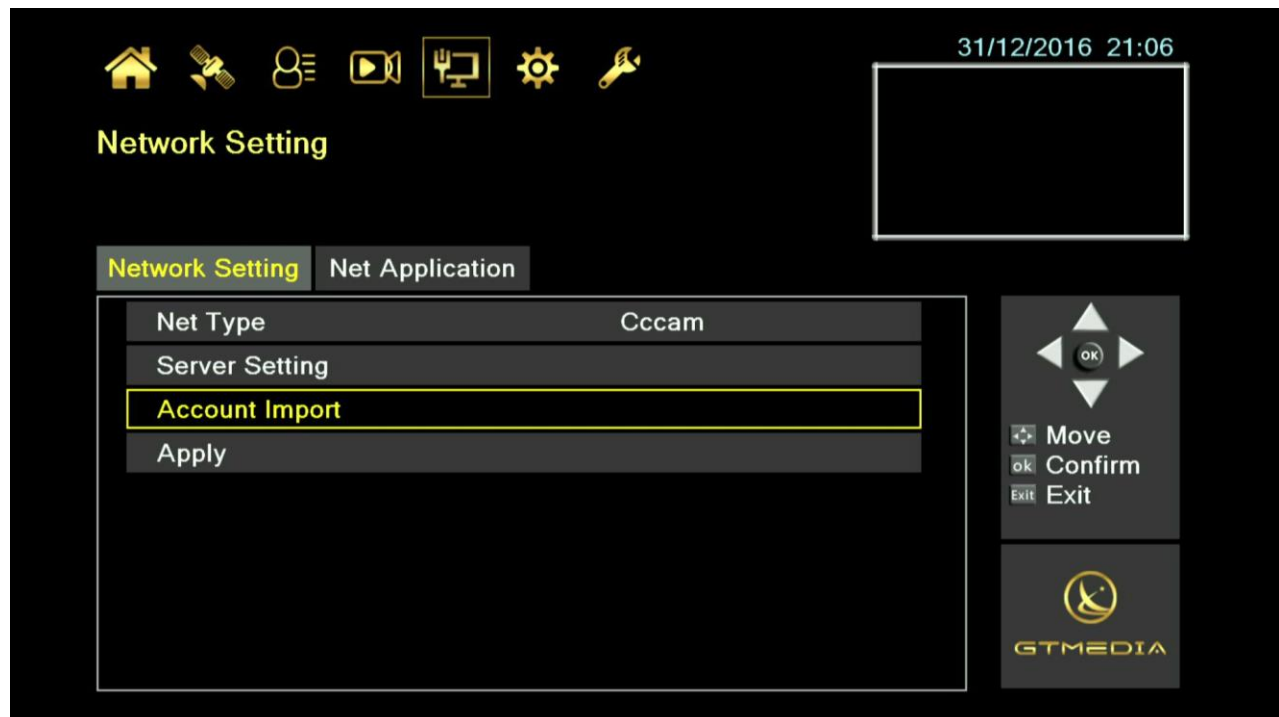
➤ **Step 4** Plug in the U Disk to V9 Super box,power on the box and enter to the submenu of Network Setting(like up picture P-2).

➤ **Step 5** Make sure the focus is on the "Net choose "or "Network Configuration" item,then press "6666"on remote and it will show two hidden item like up picture(P-3),focus on "Protocol"item then enter OK key.

➤ **Step 6** Choose the type of key you want import by select 'Net Type' item,if the U disk has mount on the box the 'Account Import' item is active,Focus on the 'Account Import' item like below picture(P-6) and press OK on remote,for a moment it will pop up a dialog remind you whether it is success or not.(if it fail ,please



check the XXXcam.cfg format is the same as the sample).



P-6

## 2.2 cccam/newcam/mgcam Key Example

```
##### Newcam Sample#####
/*type*/ /*server*/ /*port*/ /*user*/ /*passwd*/ /*Deskey*/
N: 192.168.0.103 2400 13000 13000 0102030405060708091011121314
```

```
##### cccam Sample#####
/*type*/ /*server*/ /*port*/ /*user*/ /*passwd*/ /*Deskey*/
C: hd.dm8000s.com 31018 cezhl gjii 0102030405060708091011121314
```

```
##### mgcam Sample#####
/*type*/ /*server*/ /*port*/ /*user*/ /*passwd*/
M: 192.168.0.103 2400 13000 13000
```

## 3. How to Import/Export IPTV to box

### 3.1 Import IPTV

➤ **Step 1** Create a txt file then rename it to **custom\_url.m3u** on your PC.

➤ **Step 2** Edit the custom\_url.m3u as below picture (P-7).The picture shows import IPTV url to box,you can add no more than 2000 url in this file.

```
#EXTINF:-1,SPORT TV +
http://www.painelpro.net:8000/live/andre123/andre123/4377.ts
#EXTINF:-1,SPORT TV 1
http://www.painelpro.net:8000/live/andre123/andre123/4376.ts
#EXTINF:-1,SPORT TV 2
http://www.painelpro.net:8000/live/andre123/andre123/4374.ts
#EXTINF:-1,SPORT TV 3
http://www.painelpro.net:8000/live/andre123/andre123/4372.ts
#EXTINF:-1,SPORT TV 4
http://www.painelpro.net:8000/live/andre123/andre123/4370.ts
#EXTINF:-1,SPORT TV 5
http://www.painelpro.net:8000/live/andre123/andre123/4369.ts
```

Url Name

Url Address

P-7

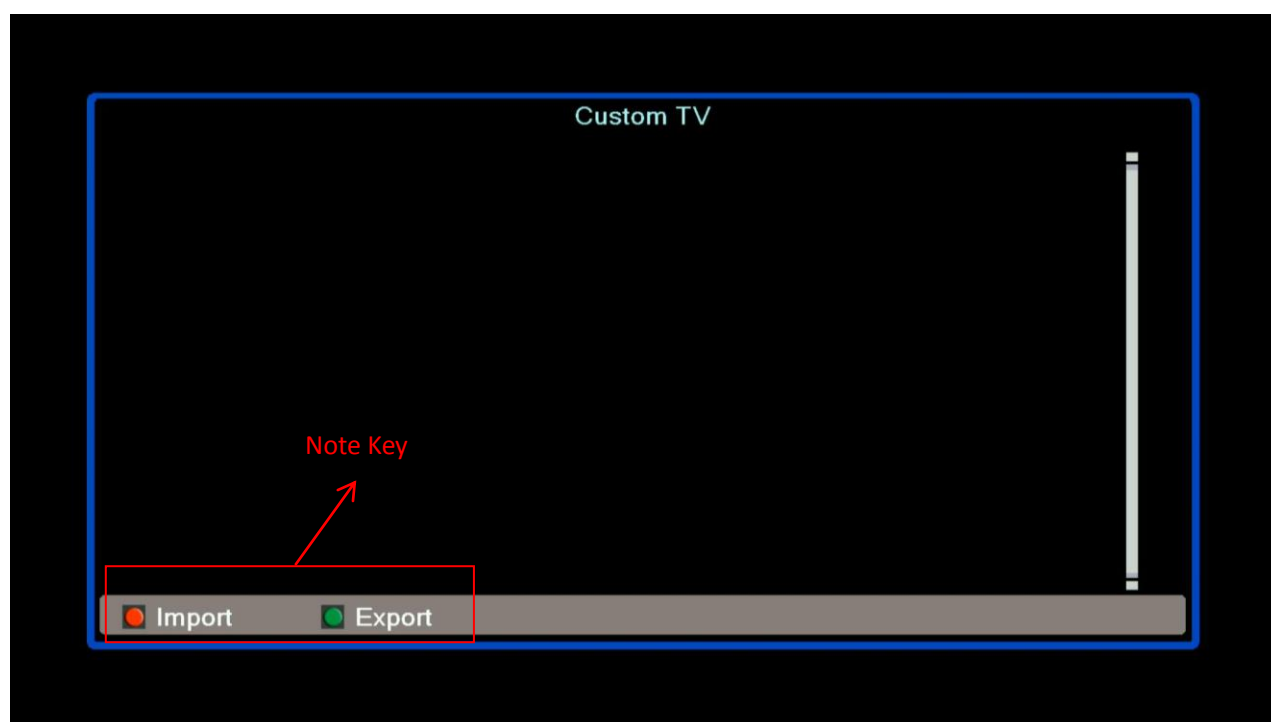
➤ **Step 3** Prepare a usb storage and copy the coustom\_url.m3u file to it.

➤ **Step 4** Plug in the U Disk to V9 Super box,power on the box Then Focus on the Web TV on Home page(like blew picture P-8).



P-8

➤ **Step 5** Press “OK” it will show Custom TV page, Press Red key as the note below(P-9), for a moment it will dialog remind you whether it is success or not (if it fail, please check the IPTV url format is the same as the sample).



P-9

11

➤ **Step 6** If it note Import success,press Exit twice and Enter Web TV again,it will show your url name,and you can play it normal .



P-10

## 3.2 Export IPTV

➤ **Step 1** Plug in the usb to V9 Super box,power on the box Then Focus on the Web TV on Home page(like up picture P-3).

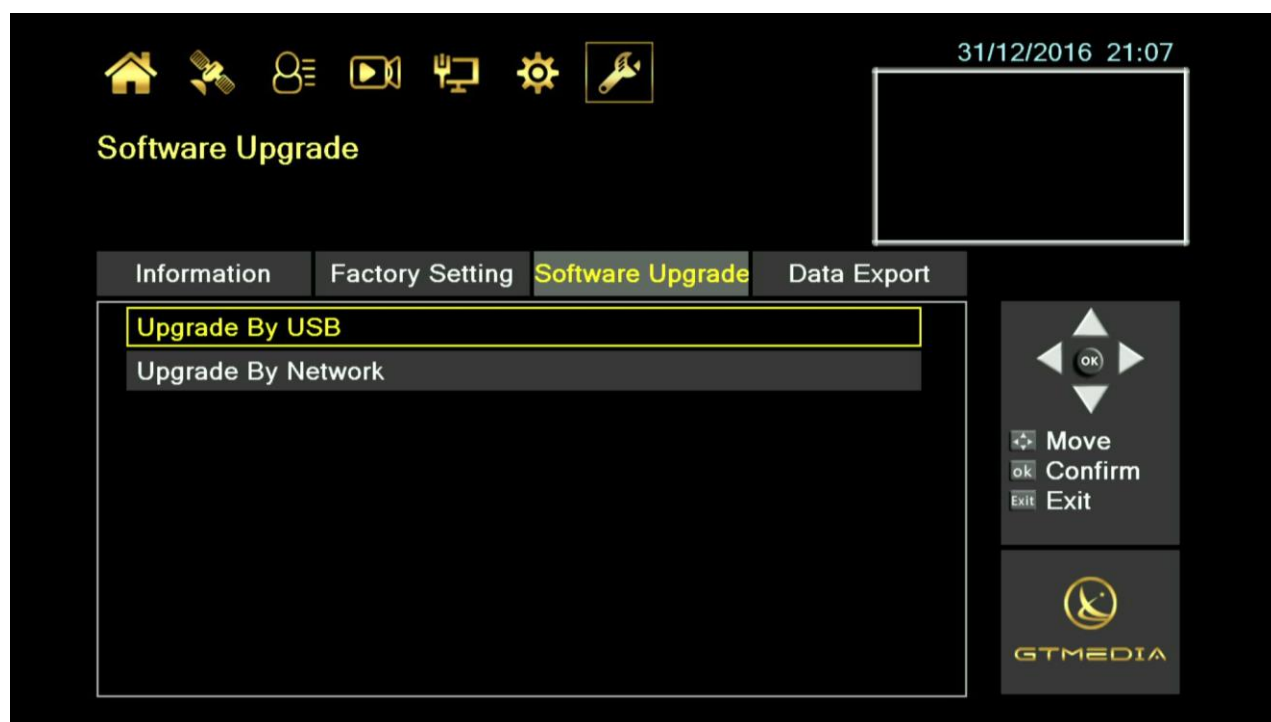
➤ **Step 2** Press "OK" it will show Custom TV page,Press Green key as the note below(see P-9),for a moment it will pop up a dialog remind you whether it is success or not(if it success,it will output a new file name coustom\_url\_export.m3u ).

## 4. How to upgrade software

### 4.1 USB upgrade

➤ **Step 1** Get the new upgrade file from our website <http://www.freesat.cn/> it may named Freesat\_V9Super.bin, then copy it to a usb storage.

➤ **Step 2** Plug in the usb to v9 Super box, power on the box then enter to the submenu of 'software Upgrade' (like the below picture P-11).



P-11

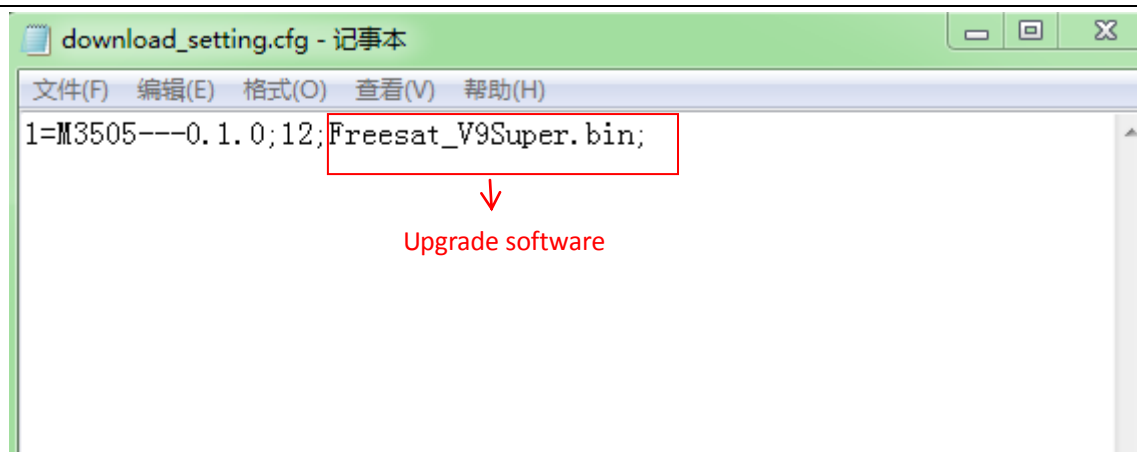
➤ **Step 3** Choose the Upgrade Mode to All Code, then choose the Upgrade File to the file you download from our website. Move the Focus to 'Start', press 'OK' and it will start upgrade.

### 4.2 Network upgrade

Network Upgrade need a windows PC as a FTP server, if you don't have one, please use USB Upgrade.

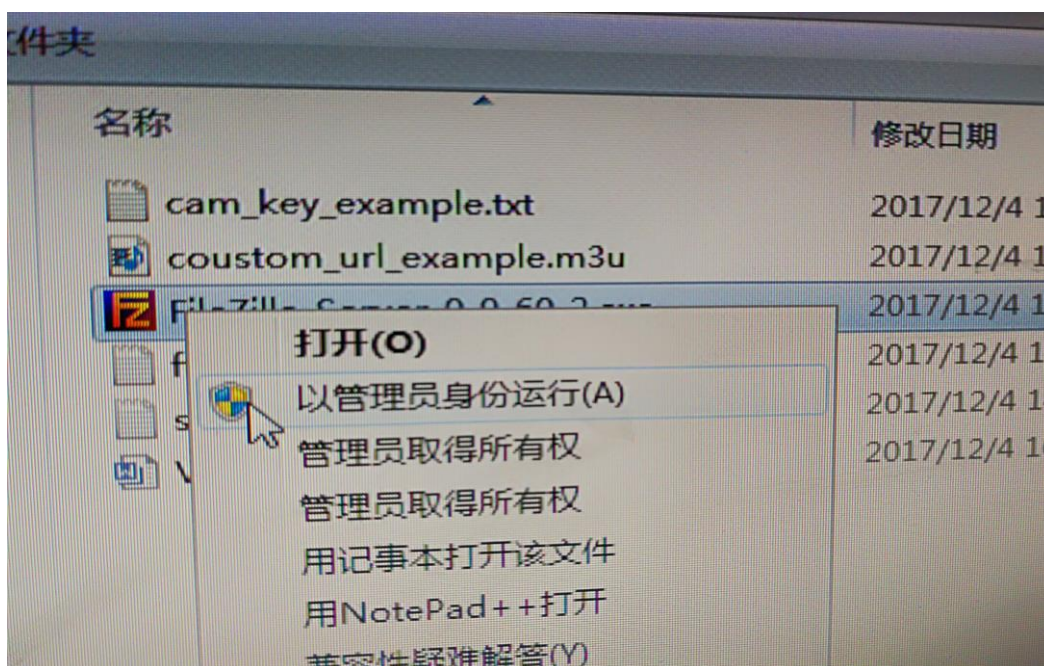
➤ **Step 1** Create a new folder on your PC, Move the upgrade file to this folder.

➤ **Step 2** Create a txt file then rename it to download\_setting.cfg, edit it as below picture (P-12).



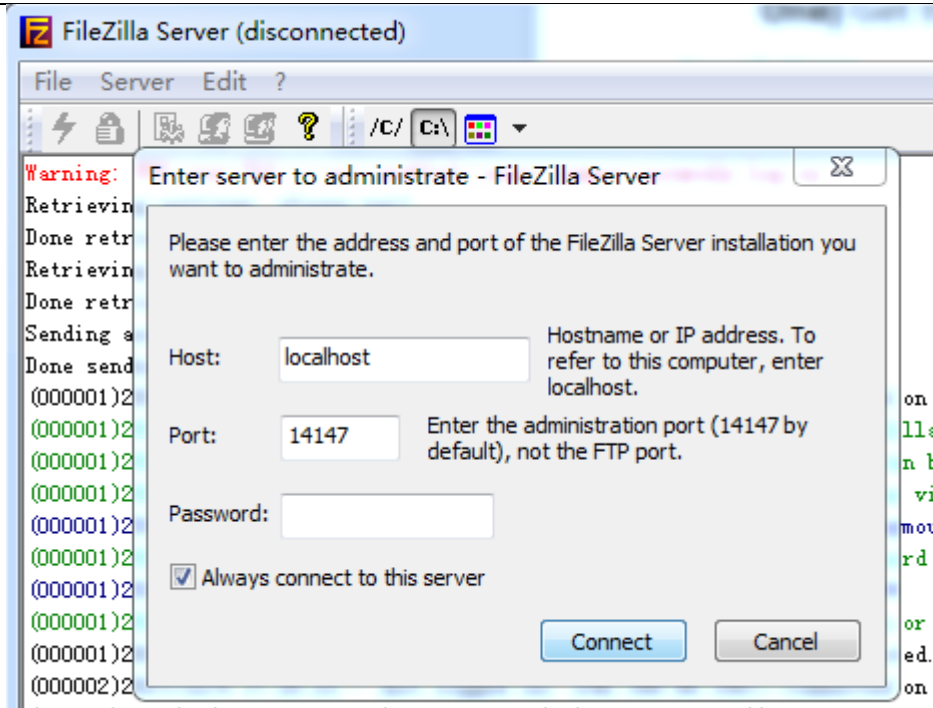
P-12

➤**Step 3** Then we need build a ftp server for broadcasting our upgrade software.I always use filezilla to build this Server.First download Filezilla\_Sercer\_XXX.exe from net then run it as an administrator(Please make sure open by administrator(see P-13),or you can't transfer file by ftp successful )then click next always to install this software.



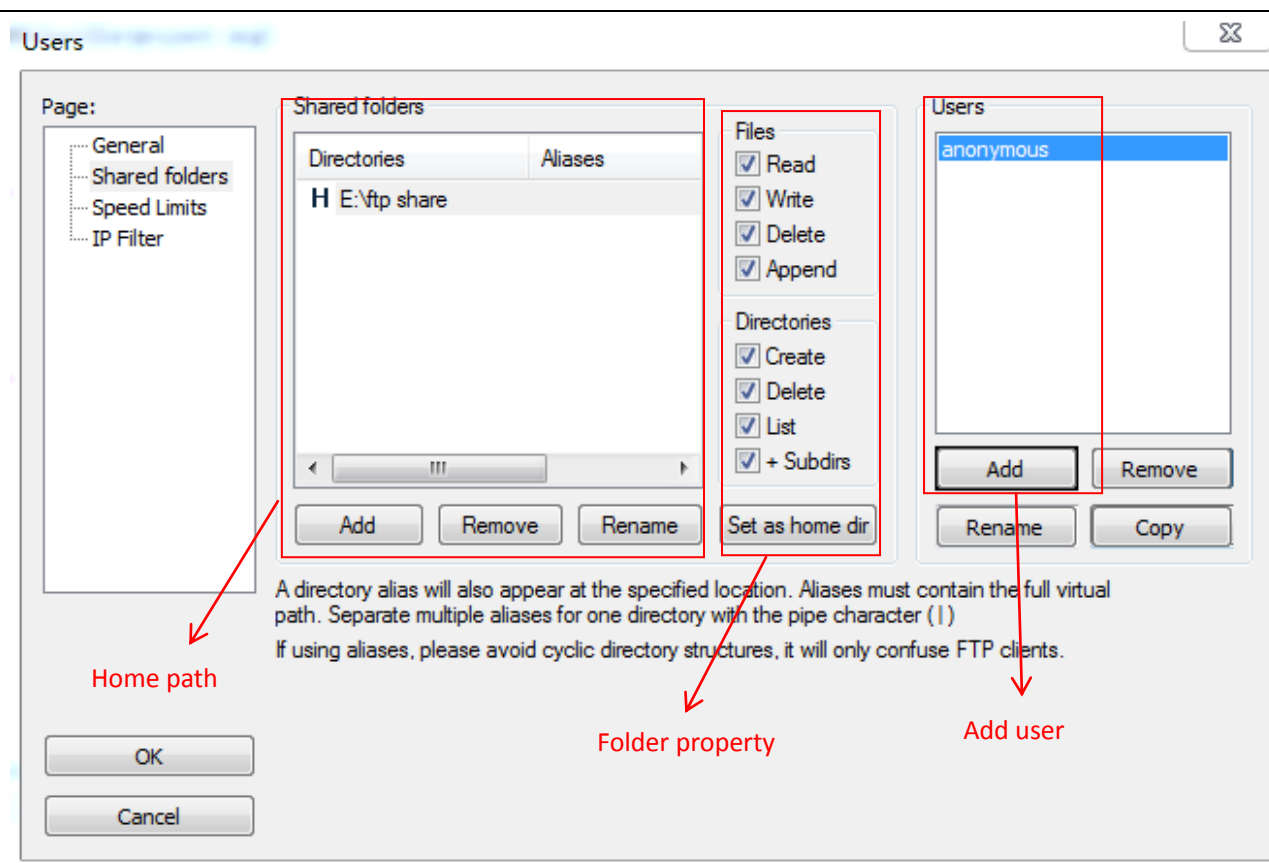
P-13

After install this software,we should blind this server with our PC. Select File->Connect to server ,it will pop up the below picture(P-14),click connect(no need modify host and port),and the log show logged on.



P-14

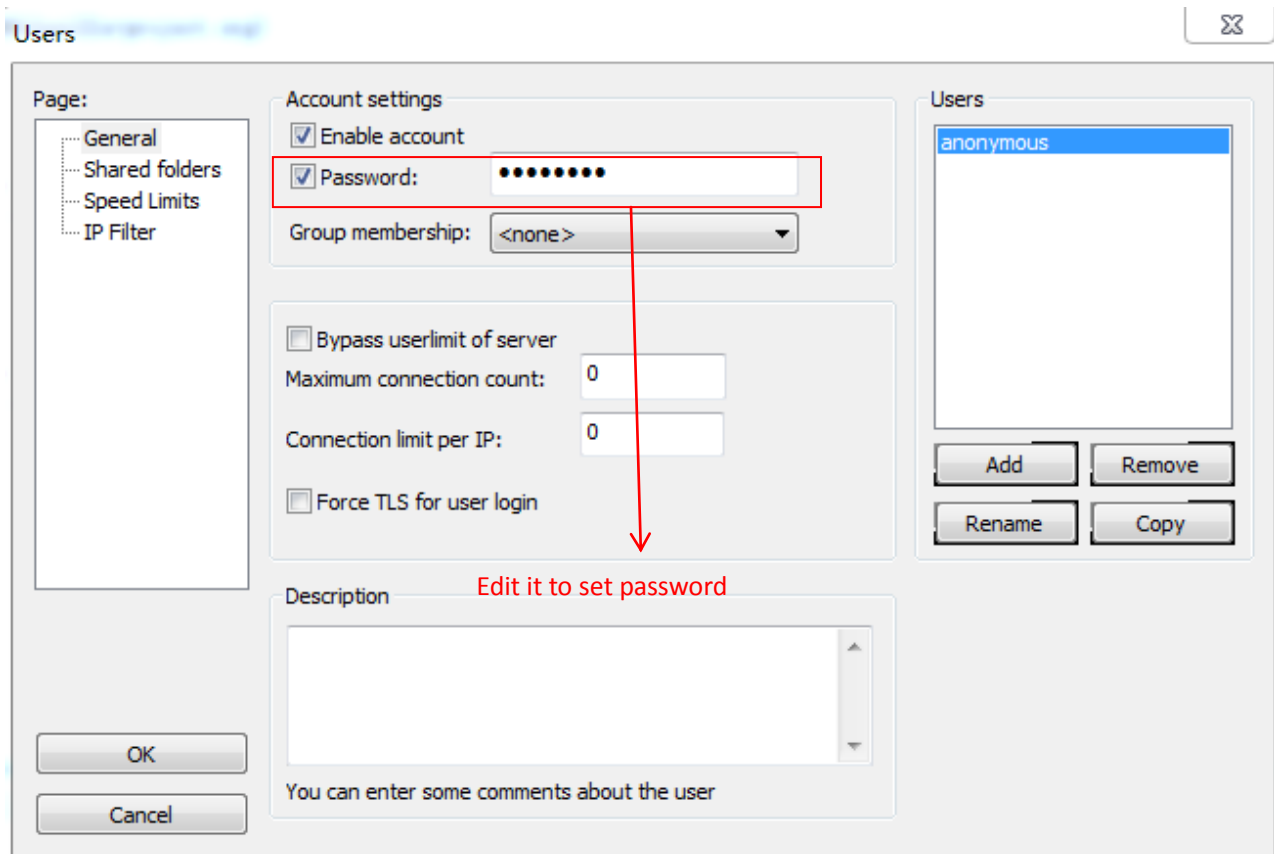
Then we need to set the user name ,password,and home path .Select Edit->User ,It will pop a windows like below picture(P-12).At this part ,we suggest your user name is 'anonymous' and the password is '88888888',because This is our v9 box default value. Set home path and user as below picture(P-15)



P-15

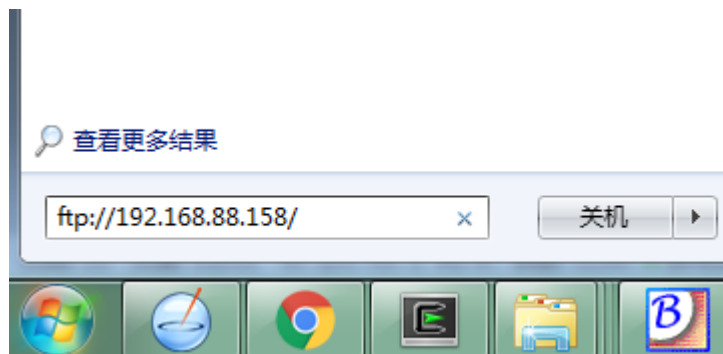
Set the password as below picture(P-16)





P-16

After Set these configure ,you can test whether you ftp server is opening,input [ftp://XXXX /](ftp://XXXX/) on you computer like below picture(P-17) (XXX is your computer IP address)

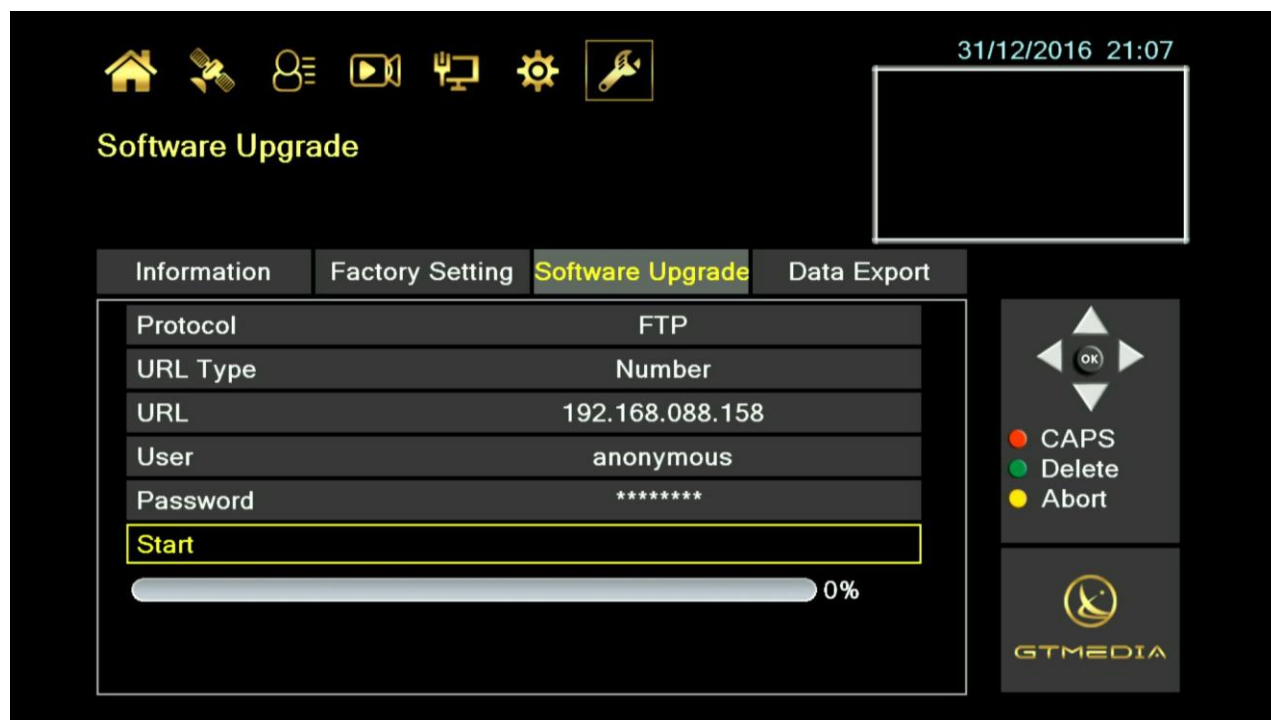


P-17

After you input you user and password ,you can look the files you put in the home path means the ftp server build successful.

**➤Step 4** Power on your V9 box ,let its network is OK(make sure its' IP at the same gateway with your PC).Enter the submenu of Software Upgrade,choose the 'Upgrade By Network' and enter.

**➤Step 5** Set Protocol to FTP,Then set the right URL, user and password like below picture (P-15),press Start and it will start network upgrade.



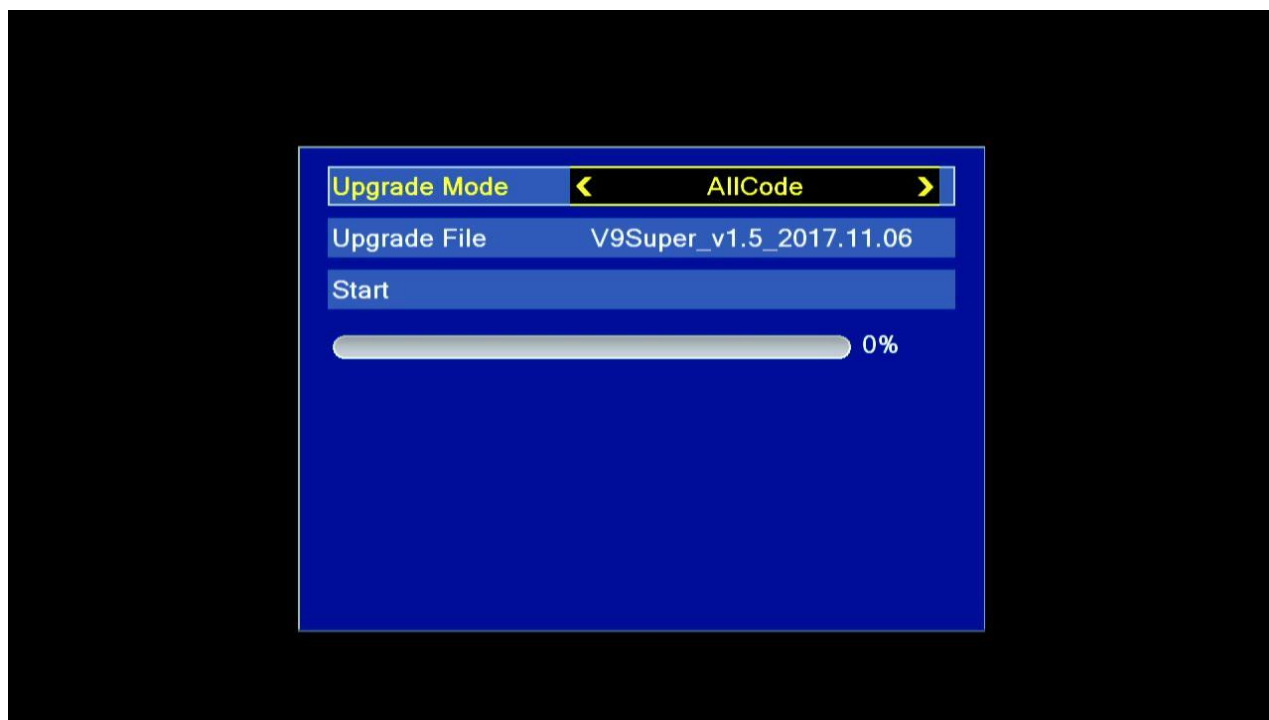
P-18

## 4.3 Force upgrade

When our box have some software issue(such as continuing reboot )cause we can't enter home menu,we can try to use force upgrade to update our software.

➤ **Step 1** Rename the upgrade software to \*.abs file,(for example,if your upgrade file is 'Freesat\_v9super.bin,you can rename it to 'Freesat\_v9super.abs')then put it on an USB storage then plug in the V9 box.

➤ **Step 2** Power on the box and press 'Menu' key perpetual at the same time until the TV show below picture(P-15)and the digital pipe show 'up9' means we enter force upgrade page.



P-19

➤ **Step 3** choose the right upgrade files(the \*.abs file) then press start ,and it start burn the software to box.